

grade one panel fabric specifications

Crosstown		Dune	
width	66" usable	width	66" usable
content	TERRATEX® 100% recycled polyester	content	100% polyester
repeat	12.5" vertical, 16.2" horizontal	weight	11 ± 1.00 oz./lin. yd.
weight	13.6 ± 1.0 oz./lin. yd.		
performance		performance	
breaking strength ASTM D5034	250 lbs. min. warp, 150 lbs. min. fill	breaking strength ASTM D5034	160 lbs. min. warp, 110 lbs. min. fill
colorfastness to crocking AATCC-8	wet 4, dry 4	colorfastness to crocking AATCC-8	wet 4, dry 4
colorfastness to light AATCC 16E	40 hours min.	colorfastness to light AATCC 16E	class 5 at 40 hours
flamability		flamability	
ASTM E-84	class 1 or A	ASTM E-84	class 1 or A
state of CA. tech bulletin, 117 sec. E (CS-191-53)	passes	state of CA. tech bulletin, 117 sec. E (CS-191-53)	passes



TERRATEX® is a registered trademark of Interface Fabric Group and designates fabrics that are made from 100% recycled or compostable material using increasingly sustainable manufacturing practices to produce a high quality product that is recyclable at the end of its useful life.

panel fabric
grade one

NOTE: Colors and/or textures shown are approximate. Prior to ordering, please request an actual sample to confirm colors.



crosstown 1101
trompe d'oeil



crosstown 1121
stucco



crosstown 1141
cement



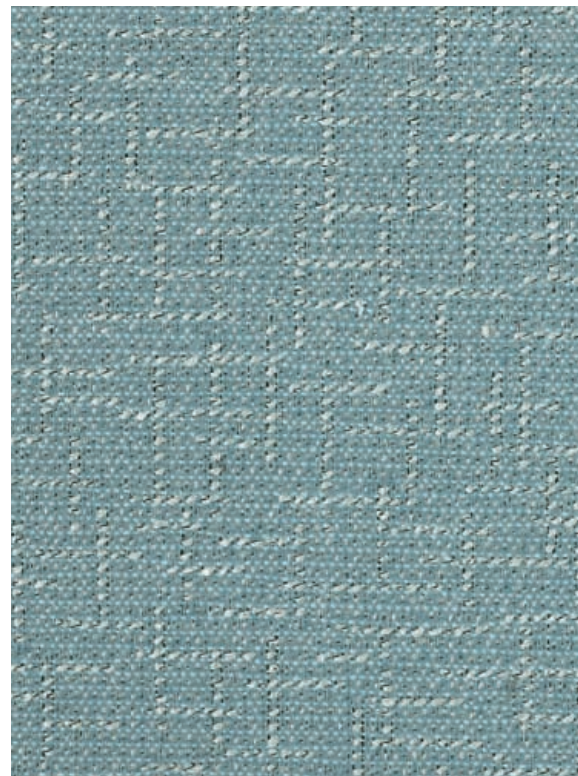
crosstown 1151
buff



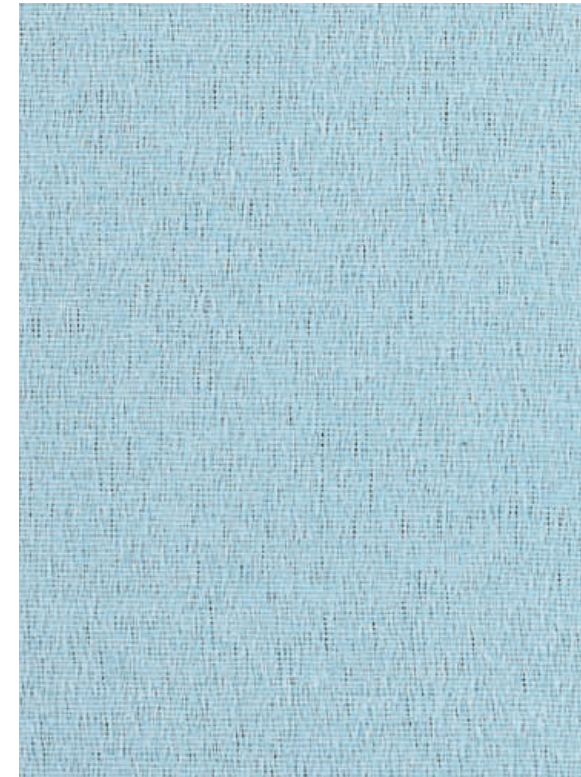
crosstown 1161
charcoal



crosstown 1111
sterling



crosstown 1131
waterfront



dune 2361
early



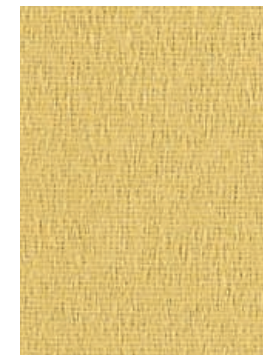
dune 2311
deep night



dune 2281
nectar



dune 2291
hot sun



dune 2331
bright



dune 2371
new



dune 2251
haze



dune 2381
erosion



dune 2301
raven



dune 2341
late

NOTE: Colors and/or textures shown are approximate. Prior to ordering, please request an actual sample to confirm colors.

NOTE: Colors and/or textures shown are approximate. Prior to ordering, please request an actual sample to confirm colors.