

tayco.
work well.™

panel fabrics
grade two

tayco.
work well.™

grade two panel fabric specifications

| Tempest | | Lily Pad | |
|---------|-----------------------------------|----------|-----------------------------------|
| width | 66" usable | width | 66" usable |
| content | TERRATEX® 100% recycled polyester | content | TERRATEX® 100% recycled polyester |
| weight | 11.3 ± 1.0 oz./lin. yd. | repeat | 16.7" vertical, 13.2" horizontal |
| | | weight | 13.4 ± 1.0 oz./lin. yd. |

| performance | | performance | |
|-----------------------------------|--|-----------------------------------|--|
| breaking strength ASTM D5034 | 180 lbs. min. warp, 160 lbs. min. fill | breaking strength ASTM D5034 | 260 lbs. min. warp, 120 lbs. min. fill |
| colorfastness to crocking AATCC-8 | wet 3, dry 4 | colorfastness to crocking AATCC-8 | wet 4, dry 4 |
| colorfastness to light AATCC 16E | 40 hours min. | colorfastness to light AATCC 16E | 40 hours min. |

| flamability | | flamability | |
|-------------|--------------|--|--------------|
| ASTM E-84 | class 1 or A | ASTM E-84 | class 1 or A |
| | | state of CA. tech bulletin, 117 sec. E (CS-191-53) | passes |

| Groove | | Asana | |
|---------|-----------------------------------|---------|--|
| width | 66" usable | width | 66" usable |
| content | TERRATEX® 100% recycled polyester | content | Eco Intelligent® 100% recycled polyester |
| repeat | 20.0" vertical, 16.75" horizontal | repeat | 0.16" horizontal, 0.87" vertical |
| weight | 15.0 ± 1.0 oz./lin. yd. | weight | 11 ± 1.0 oz./lin. yd. |

| performance | | performance | |
|----------------------------------|--|----------------------------------|---------------------------------------|
| breaking strength ASTM D5034 | 225 lbs. min. warp, 180 lbs. min. fill | breaking strength ASTM D5034 | 220 lbs. min. warp, 85 lbs. min. fill |
| colorfastness to light AATCC 16E | 40 hours min. | colorfastness to light AATCC 16E | class 5 at 40 hours |

| flamability | | flamability | |
|--|--------------|--|--------------|
| ASTM E-84 | class 1 or A | ASTM E-84 | class 1 or A |
| state of CA. tech bulletin, 117 sec. E (CS-191-53) | passes | state of CA. tech bulletin, 117 sec. E (CS-191-53) | passes |



TERRATEX® is a registered trademark of Interface Fabric Group and designates fabrics that are made from 100% recycled or compostable material using increasingly sustainable manufacturing practices to produce a high quality product that is recyclable at the end of its useful life.



Eco Intelligence® is a registered trademark of a product process designed to embody the intelligence of natural systems (such as nutrient cycling, independence, abundance, diversity, solar power, regeneration).

100% of the electricity used to make this product is matched by green-e certified renewable energy certificates. (www.green-e.org)

NOTE: Colors and/or textures shown are approximate. Prior to ordering, please request an actual sample to confirm colors.

panel fabric | grade two

tayco.
work well.™

panel fabric | grade two

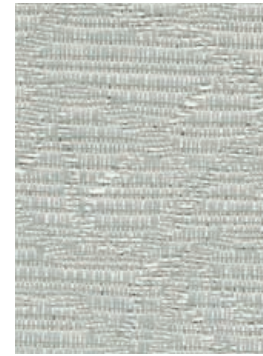
tayco.
work well.™

panel fabric | grade two

tayco.
work well.™



lily pad 1652
aloe



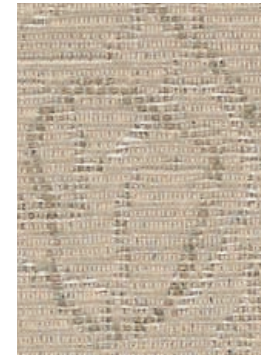
lily pad 1622
shimmer



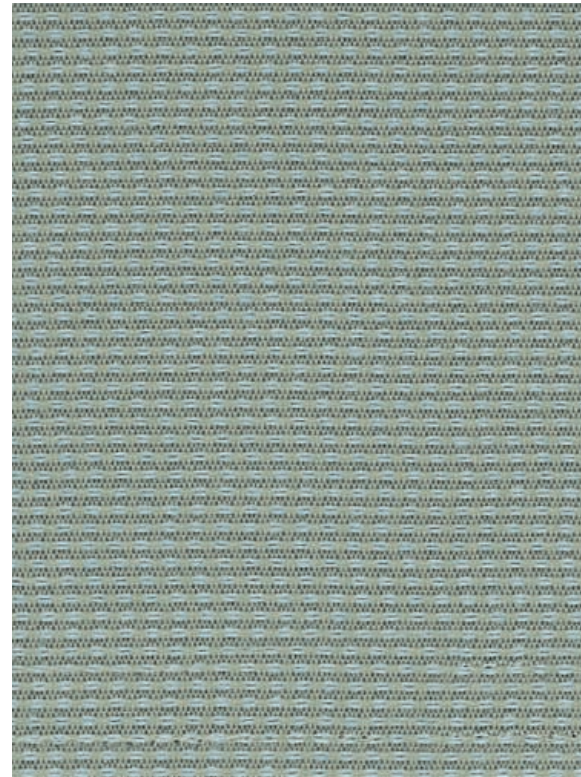
lily pad 1612
cloud



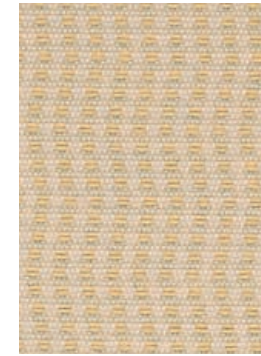
lily pad 1642
dew



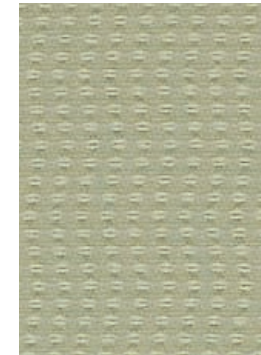
lily pad 1662
latte



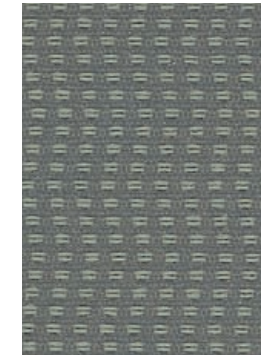
asana 1052
dharma



asana 1012
bliss



asana 1022
lotus



asana 1072
hatha



tempest 1102
cotton



tempest 1112
zebra



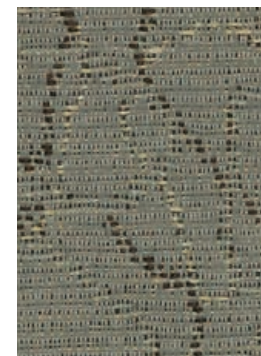
tempest 1122
silk



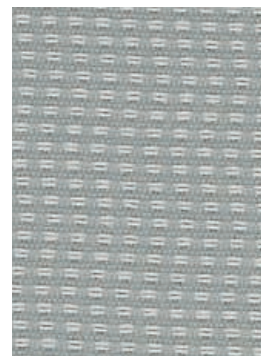
groove 1922
spring



lily pad 1632
driftwood



lily pad 1602
dragon



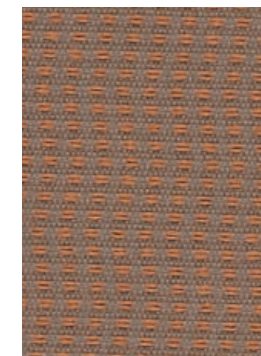
asana 1062
chakra



asana 1042
cosmos



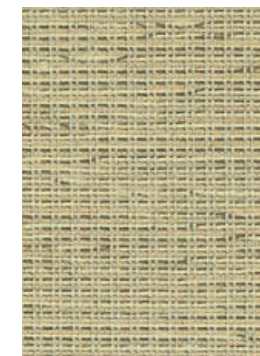
asana 1032
cocoon



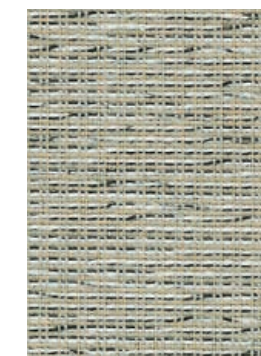
asana 1002
raja



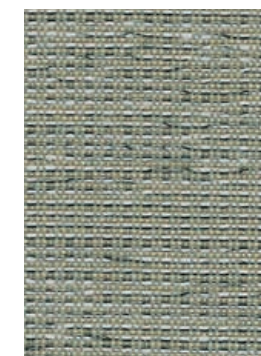
tempest 1182
redwood



tempest 1132
hemp



tempest 1172
tumbleweed



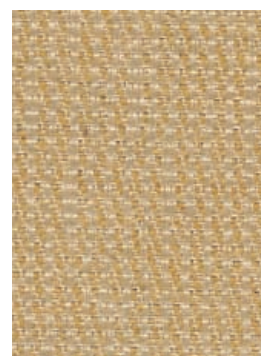
tempest 1192
dragonfly



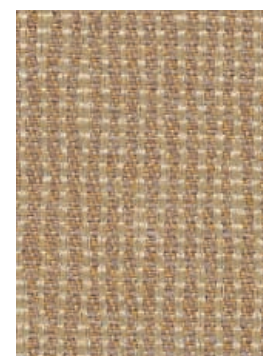
groove 1912
dew drop



groove 1962
dusk



groove 1902
marigold



groove 1932
brandy



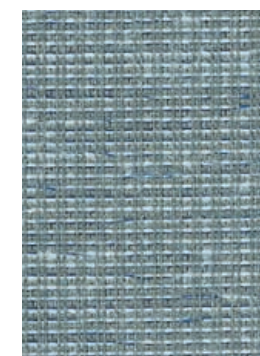
groove 1942
mocha



groove 1952
graphite



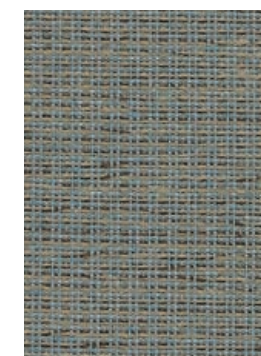
tempest 1142
frost



tempest 1152
starlight



tempest 1162
slate



tempest 1402
flint

NOTE: Colors and/or textures shown are approximate. Prior to ordering, please request an actual sample to confirm colors.

NOTE: Colors and/or textures shown are approximate. Prior to ordering, please request an actual sample to confirm colors.

NOTE: Colors and/or textures shown are approximate. Prior to ordering, please request an actual sample to confirm colors.