

tayco.
work well.™

tayco.
work well.™

grade two fabric specifications

| Minimalism 100% recycled | | Cubism 100% recycled | |
|----------------------------|-----------------------------------|------------------------|--|
| width | 66" usable | width | 66" usable |
| content | TERRATEX® 100% recycled polyester | content | Eco Intelligent® 100% recycled polyester |
| repeat | none | repeat | horizontal: 7.7", vertical: 9.4" |
| weight | 13.0 ± 1 ounce per linear yard | weight | 10.8 ± 1 ounce per linear yard |

| performance | | performance | |
|-----------------------------------|-------------------------------------|-----------------------------------|-------------------------------------|
| breaking strength ASTM D5034 | warp: 220 lbs., fill: 180 lbs. | breaking strength ASTM D5034 | warp: 236.7 lbs., fill: 206.8 lbs. |
| colorfastness to crocking AATCC-8 | dry: class 4 min., wet: class 4 min | colorfastness to crocking AATCC-8 | dry: class 4 min., wet: class 4 min |
| colorfastness to light AATCC 16E | class 5 (40 hours) | colorfastness to light AATCC 16E | class 5 (40 hours) |

| flammability | | flammability | |
|--|--------------|---|---------|
| ASTM E-84 | class 1 or A | ASTM E-84 | class 1 |
| state of CA, tech bulletin, 117 sec. E (CS-191-53) | passes | state of CA, tech bulletin, 117 (CS-191-53) | passes |

| Symbolism 100% recycled | |
|---------------------------|--|
| width | 66" usable |
| content | Eco Intelligent® 100% recycled polyester |
| repeat | horizontal: 14.4", vertical: 6.9" |
| weight | 10.9 ± 1 ounce per linear yard |

| performance | |
|-----------------------------------|------------------------------------|
| breaking strength ASTM D5034 | warp: 286.9 lbs., fill: 239.7 lbs. |
| colorfastness to crocking AATCC-8 | dry: class 4 min., wet: class 4 |
| colorfastness to light AATCC 16E | class 5 (40 hours) |

| flammability | |
|--|---------|
| ASTM E-84 | class 1 |
| state of CA, tech bulletin, 117 sec. E (CS-191-53) | passes |



TERRATEX® is a registered trademark of Interface Fabric Group and designates fabrics that are made from 100% recycled or compostable material using increasingly sustainable manufacturing practices to produce a high quality product that is recyclable at the end of its useful life.



Eco Intelligence® is a registered trademark of a product or process designed to embody the intelligence of natural systems (such as nutrient cycling, interdependence, abundance, diversity, solar power, regeneration).

100% of the electricity used to make this product is matched by green-e certified renewable energy certificates. (www.green-e.org).

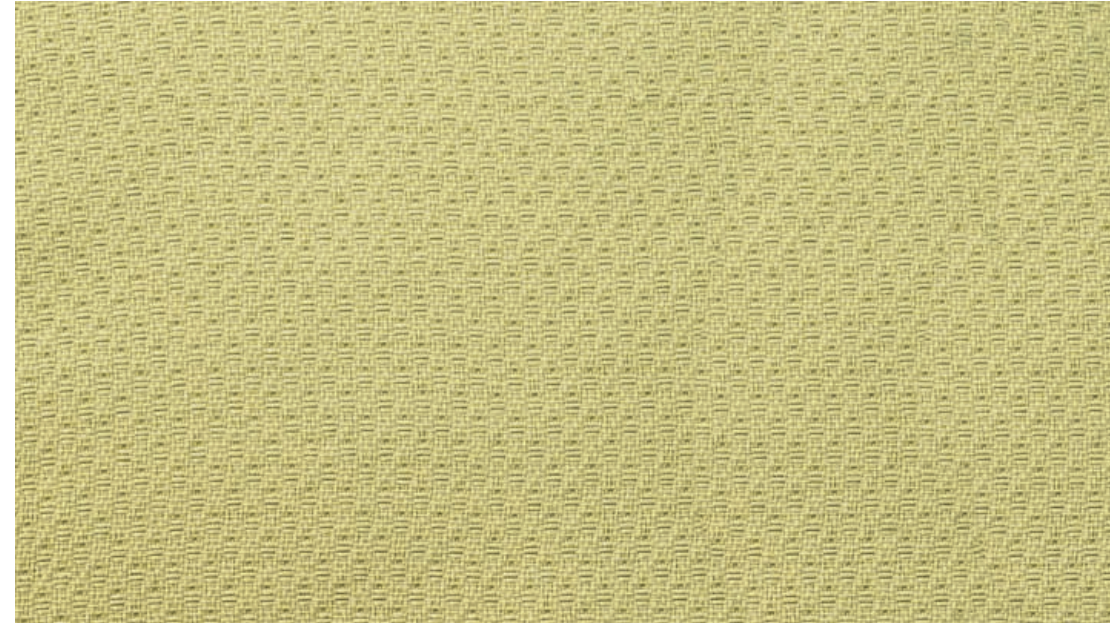
W-S fabrics may be cleaned with mild, water-free solvents or water-based cleaning agents or foam.

NOTE: Colors and/or textures shown are approximate. Prior to ordering, please request an actual sample to confirm colors.

up
grade two fabric

up I grade two fabrics
minimalism

tayco.
work well.™



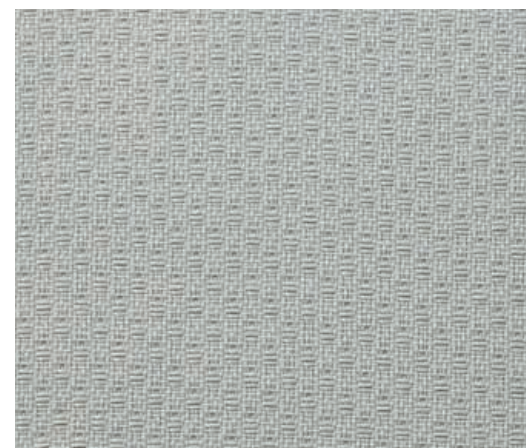
minimalism 4002 stella



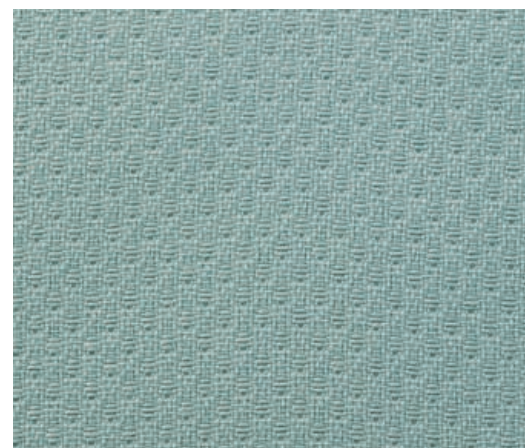
minimalism 4012 andre



minimalism 4022 judd



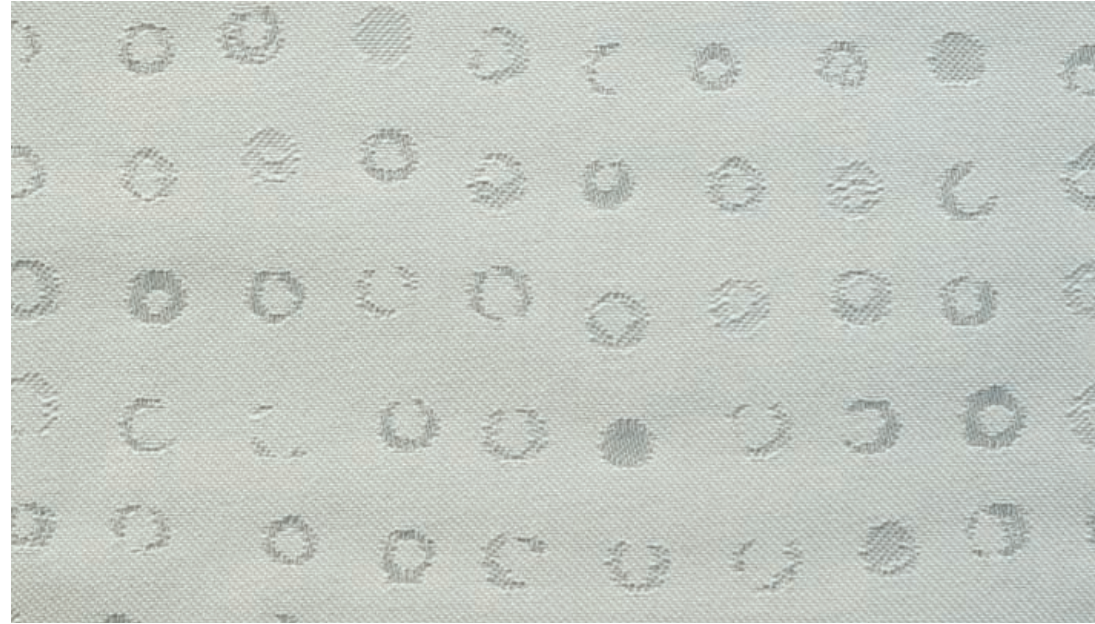
minimalism 4032 morris



minimalism 4042 flavin

up I grade two fabrics
symbolism

tayco.
work well.™



symbolism 4102 redon



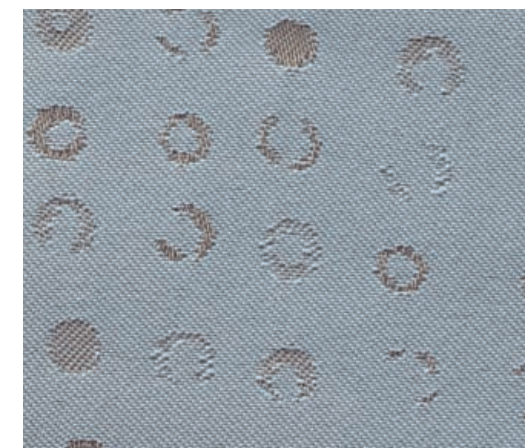
symbolism 4112 munch



symbolism 4122 moreau



symbolism 4132 klinger



symbolism 4142 bernard

up I grade two fabrics
cubism

tayco.
work well.™



cubism 4202 picasso



cubism 4212 braque



cubism 4222 adler



cubism 4232 leger



cubism 4242 gris

NOTE: Colors and/or textures shown are approximate. Prior to ordering, please request an actual sample to confirm colors.

NOTE: Colors and/or textures shown are approximate. Prior to ordering, please request an actual sample to confirm colors.

NOTE: Colors and/or textures shown are approximate. Prior to ordering, please request an actual sample to confirm colors.